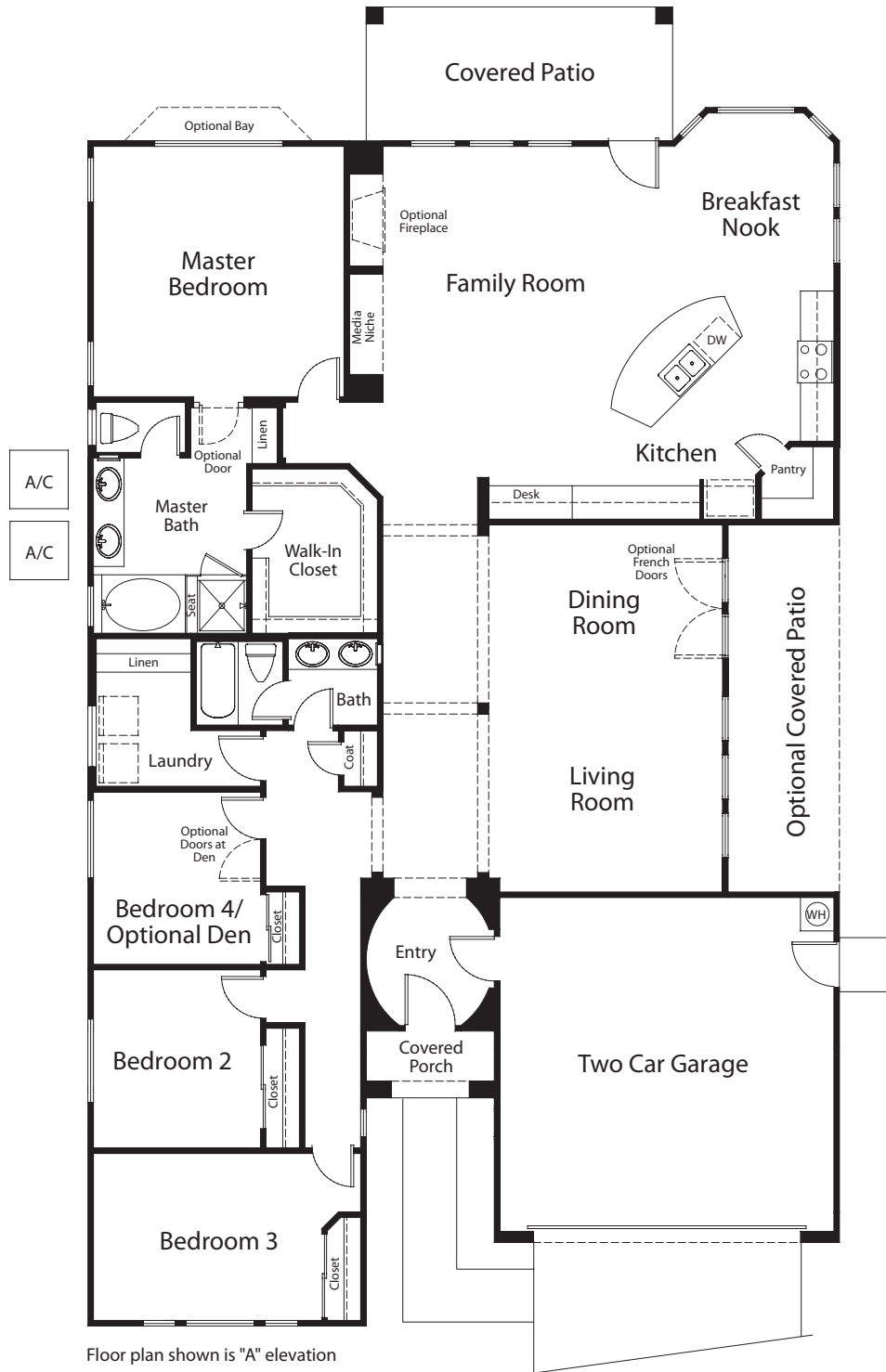


LAS PALMAS

The Carmelo

2,399 square feet
 One-Story, 4 Bedrooms with Private Master Suite,
 Side Yard Courtyard, 2 Baths and 2 Car Garage



In the interest of continuous improvement, Ashton Woods Homes reserves the right to change or modify pricing, floor plans, materials, features and specifications without prior notice or obligation. All dimensions, square footages, ceiling heights and window sizes, styles and locations are approximate and may vary per elevation. All renderings and floor plans are the artist's conception and may vary from the actual plans and homes as built. Please consult your Sales Associate for details. These prices do not include lot premiums or pre-plotted options © Ashton Woods Homes 2006.

Effective 01/30/07



www.ashtonwoods.com