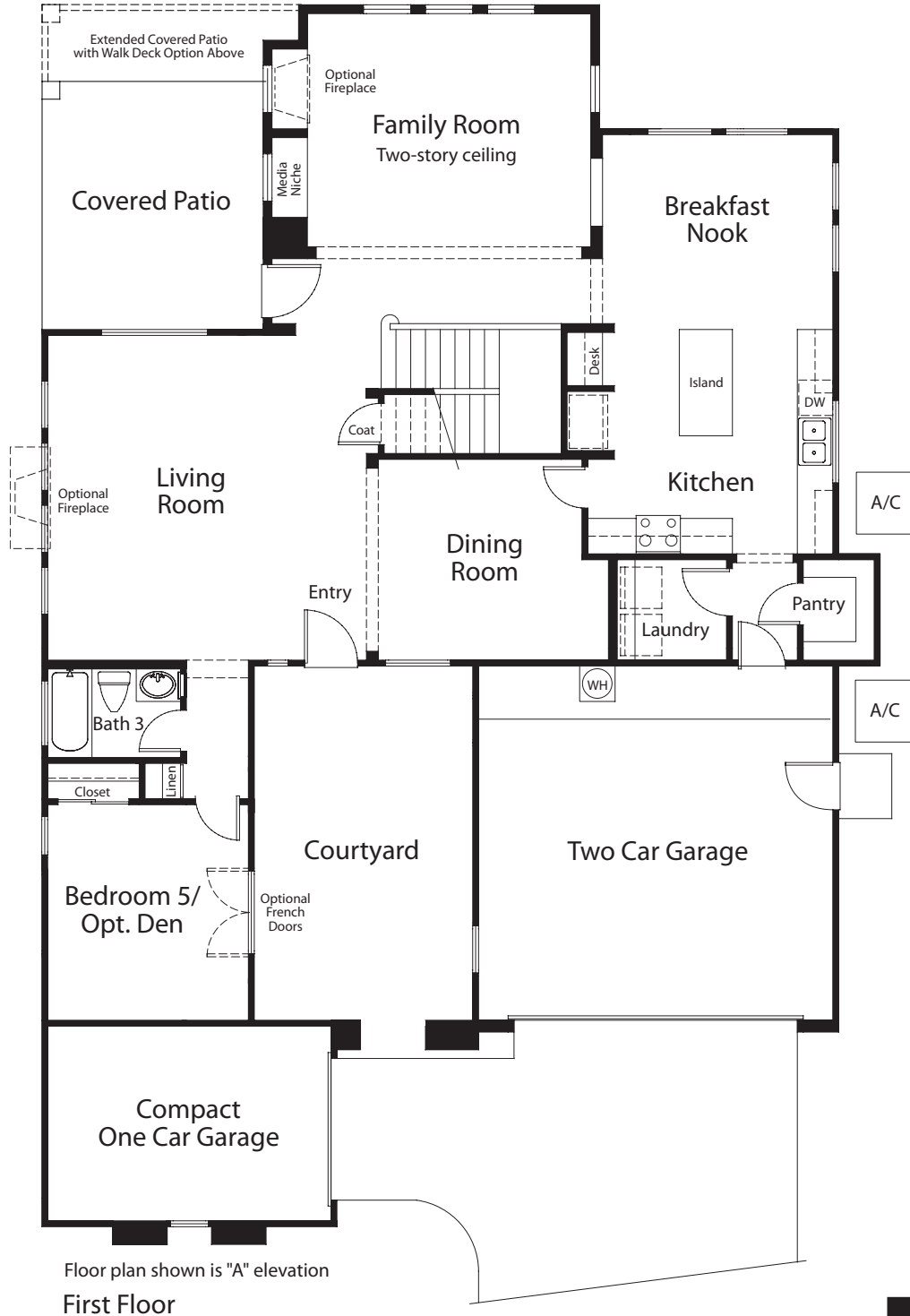


LAS PALMAS

The Capistrano

2,873 to 3,091 square feet

Two-Story, 5 Bedrooms Plus Computer Alcove, Entry Courtyard, Optional Bonus Room or Master Retreat, 3 Baths and 3 Car Garage



In the interest of continuous improvement, Ashton Woods Homes reserves the right to change or modify pricing, floor plans, materials, features and specifications without prior notice or obligation. All dimensions, square footages, ceiling heights and window sizes, styles and locations are approximate and may vary per elevation. All renderings and floor plans are the artist's conception and may vary from the actual plans and homes as built. Please consult your Sales Associate for details. These prices do not include lot premiums or pre-plotted options © Ashton Woods Homes 2006.

Effective 01/30/07



www.ashtonwoods.com